

3. Cascade Head Proposal Area: *Cascade Head to Whale Cove*

Cascade Head is a thriving tourist destination and valuable research area thanks to early efforts to preserve the rare plants, wildlife and grassland communities that were once common along the Oregon coast. In the early 1960s, local volunteers raised enough money to purchase the property, which they turned over to The Nature Conservancy in 1966. The Cascade Head Preserve and surrounding national forest and other lands have won recognition as a National Scenic Research Area and a United Nations Biosphere Reserve. Recognizing that it was time to protect the precious natural resources just offshore, local groups from Lincoln City and Newport submitted a proposal to protect waters surrounding this area in September of 2008. Based on their recommendations, the Our Ocean coalition included this area as part of a more comprehensive proposal for a statewide network of marine protected areas and reserves. Lincoln City unanimously passed two resolutions in support of marine reserves and marine protected areas.



Cascade Head (USFWS)

Prime habitat: This area contains a variety of prime habitats for marine life, including:

- Several important seabird nesting sites.
- Extensive rocky reefs, which provide prime habitat for a variety of plants and animals including rockfish (including the depleted yelloweye rockfish), lingcod and giant Pacific octopus.
- California sea lion, Steller sea lion and harbor seal haulouts.
- Canopy kelp forest, which provide a calm place for a diverse assortment of fish and wildlife to take shelter and feed.

Proposed protections: This site combines a **marine reserve** and a **marine protected area** that OPAC reduced in size.

- The entire **marine protected area** extends 18.4 nautical miles down the coast, from Cascade Head south to Whale Cove, and out to the Territorial Sea boundary (three nautical miles).
- Inside the protected area is a **marine reserve** at Cascade Head, which extends south to Siletz Reef (about 7.7 nautical miles). The proposed reserve would have extended the strongest level of protection to include the northern part of Siletz Reef, an extremely productive and important habitat type, but this extension was not recommended by OPAC.

The importance of a network

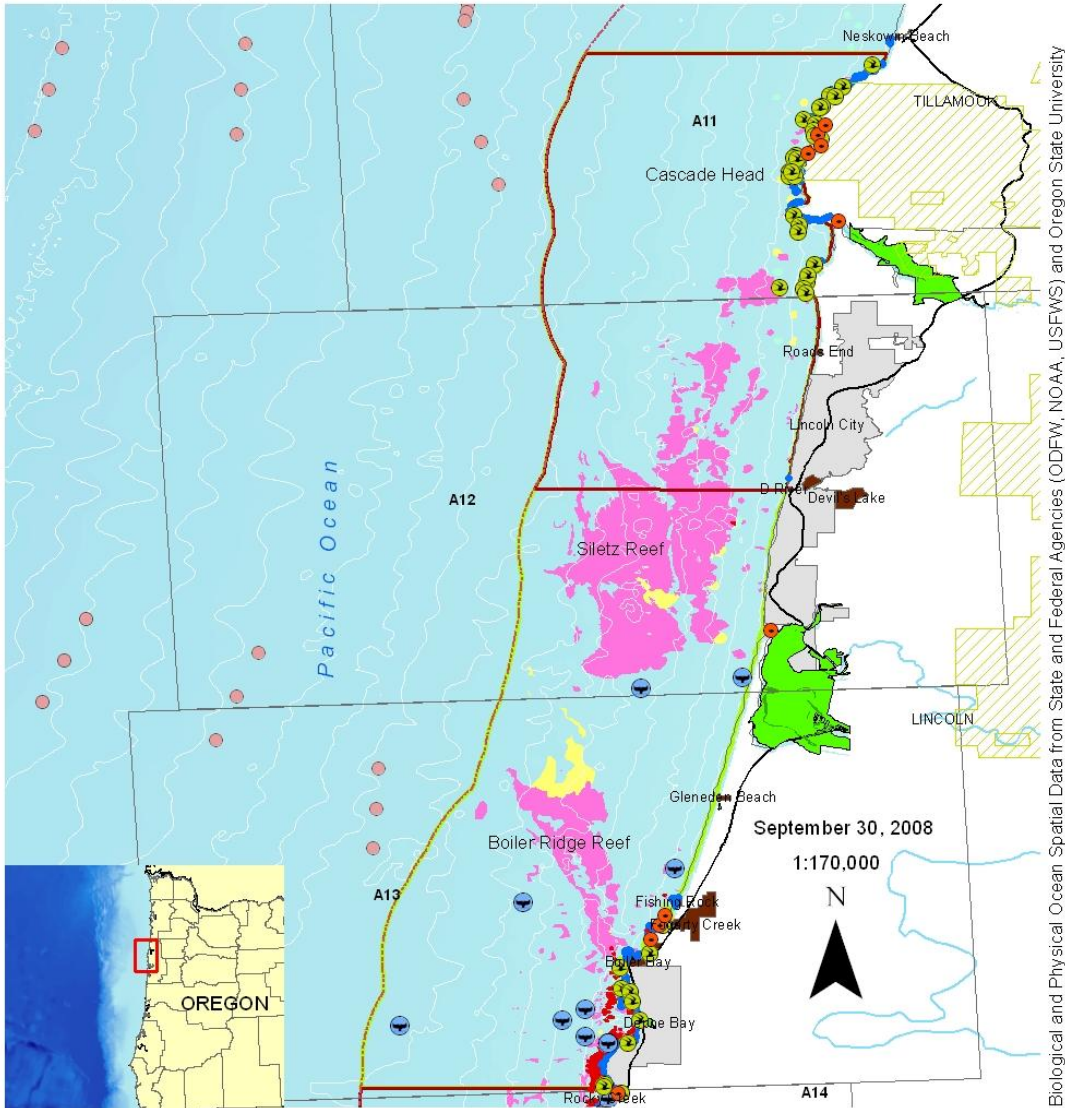
By providing a network of safe havens for marine life to feed and breed, marine reserves allow the ocean's natural productivity to restore the abundance of fish species and other marine life. Scientific research from existing marine reserves shows that a network of reserves and marine protected areas facilitates larval dispersal of aquatic species and makes them resilient. A network is necessary to protect a sample of all of Oregon's ocean habitats.

OPAC recommended a portion of the Cascade Head marine reserve proposal as an area to be further evaluated.



Cascade Head Proposal Area

Map 3



Biological and Physical Ocean Spatial Data from State and Federal Agencies (ODFW, NOAA, USEWS) and Oregon State University

Legend

- | | | | |
|-------------------------|-------------------------|----------------------|-------------------------|
| Gray Whale Observations | Gravel | 10m bathymetry | OR_tersea_3nm_line |
| seabird colonies | Rocky Reef | seagrass | OregonStateParks |
| Corals_sponges | canopy kelp | estuaries | Proposed Marine Reserve |
| Pinnipeds | MarbledMurrelet_CritHab | Nomination Map Index | Proposed MPA |
| Rocky Intertidal | | | |

One nautical mile = 1.1507 terrestrial miles.

Audubon Society of Portland
 Coast Range Association
 Environment Oregon
 Natural Resource Defense Council
 Oceana
 Oregon Shores Conservation Coalition
 Pacific Marine Conservation Council
 Pew Environment Group

4189 SE Division St.
 Portland, OR 97202

1628 North Coast Highway
 Newport, OR 97365

503.231.2718 **p**
 503.230.0903 **f**

www.ouregonocean.org

A PROJECT OF THE PEW ENVIRONMENT GROUP